



BIOTEK

COLORS



LIPS



Glacè

18ml cod. E15-41
7ml cod. E5-41

Brownish lip color. Ideal for lips outlining and contouring.



Romantic

18ml cod. E15-42
7ml cod. E5-42

Nude light brown lip color.



Love

18ml cod. E15-43
7ml cod. E5-43

Love is a medium pink lip color, that right touch of color to wear on any occasion.



Lollipop

18ml cod. E15-44
7ml cod. E5-44

Lollipop is a intermediate purplish pink lip color. Perfect and versatile to be shown off on any occasion.



Super Model

18ml cod. E15-45
7ml cod. E5-45

Supermodel is a lip color with raspberry vibes.



Rebel

18ml cod. E15-49
7ml cod. E5-49

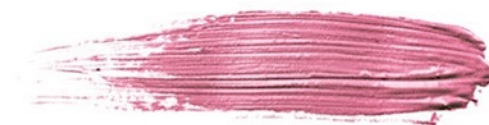
Rebel is vibrant and intense violet fuchsia lip color.



Bite

18ml cod. E15-48
7ml cod. E5-48

Bite is a bright pink lip color.



Parfum

18ml cod. E15-46
7ml cod. E5-46

Parfum is a natural antique pink lip color.



Bubble

18ml cod. E15-47
7ml cod. E5-47

Bubble is a natural, warm nude lip color.

LIPS



Dream

18ml cod. E15-50
7ml cod. E5-50

Dream is a bright cherry lip color.



Sexy

18ml cod. E15-51
7ml cod. E5-51

Sexy is a fier red lip color. A great classic, the red lipstick, emblem of femininity and sensuality.



Casinò

18ml cod. E15-52
7ml cod. E5-52

Casinò is an orange peach lip color. Ideal dark lips.



Summer

18ml cod. E15-53
7ml cod. E5-53

Summer is a bright strawberry lip color. intermediate shade between pinks and reds.



Daiquiri

18ml cod. E15-54
7ml cod. E5-54

Daiquiri is a lip color in shades of bright coral.



Flower

18ml cod. E15-55
7ml cod. E5-55

Flower is a nude lip color with a peach accent. reminds us of the velvet petals during blossom.



Kelly

18ml cod. E15-56
7ml cod. E5-56

Kelly is a brick red lip color.



Passion

18ml cod. E15-57
7ml cod. E5-57

Passion is a fresh red coral lip color, an irresistible must-have to wear every day.



Fashion

18ml cod. E15-58
7ml cod. E5-58

Fashion is a lip color in black cherry tones.

LIPS



Bordeaux

18ml cod. E15-59
7ml cod. E5-59

Bodeaux / cool red lip color.

MORE THAN EVER BROWS



Hollywood 18ml cod. E15-01
Cold Blond 7ml cod. E5-01

Cold blond color for eyebrows. Hollywood has a slight green tendency. Ideal for working on fair skins with red undertones or for correcting blond eyebrows, slightly turning red.



Madrid 18ml cod. E15-04
Cold Light Brown 7ml cod. E5-04

Cold light brown color for eyebrows. Madrid has a cold green tendency. Ideal for working on skins with a warm undertone, or for correcting light brown eyebrows turned slightly to red.



Moscow 18ml cod. E15-02
Neutral Blond 7ml cod. E5-02

Neutral blond color for eyebrows. Moscow is ideal for working on fair skin and blond eyebrows. The color has a prevalence of yellow and a neutral undertone.



Ibiza 18ml cod. E15-05
Neutral Light Brown 7ml cod. E5-05

Neutral light brown color for eyebrows. Ibiza has a neutral tendency which makes it ideal for working on all neutral skins with light brown eyebrows. Do not use it on warm skin tones.



Berlin 18ml cod. E15-03
Warm Blond 7ml cod. E5-03

Warm blond color for eyebrows. Berlin has a slight red tendency. Ideal for working on fair skins with a cold undertone, or for correcting eyebrows slightly turned to gray.



San Paolo 18ml cod. E15-06
Warm Light Brown 7ml cod. E5-06

Warm light brown color for eyebrows. Sao Paulo has a slight red tendency. Ideal for working on people with a cold undertone, or for correcting slightly gray eyebrows.

MORE THAN EVER BROWS



Portofino 18ml cod. E15-07
Cold Brown 7ml cod. E5-07

Cold brown color for eyebrows. Portofino has a slight cold / green tendency.. Ideal for working on skin with warm undertones or for correcting eyebrows that have turned slightly red.



Mykonos 18ml cod. E15-10
Cold Dark Brown 7ml cod. E5-10

Cold dark brown color for eyebrows. Mykonos has a slight cold / green tendency. Ideal for working on skins with warm undertones or for correcting eyebrows that have turned slightly red.



Paris 18ml cod. E15-08
Neutral Brown 7ml cod. E5-08

Neutral brown color for eyebrows. Paris has a neutral tendency which makes it ideal for working on all neutral skins with brown eyebrows. Do not use it on warm skin tones



Milan 18ml cod. E15-11
Neutral Dark Brown 7ml cod. E5-11

Neutral dark brown color for eyebrows. Milan has a neutral tendency which makes it ideal for working on all neutral skins with dark brown eyebrows. Do not use it on warm or cold skin understons.



Rome 18ml cod. E15-09
Warm Brown 7ml cod. E5-09

Warm brown color for eyebrows. Rome has a slight red tendency. Ideal for working on people with a cold undertones, or for correcting slightly gray eyebrows.



New York 18ml cod. E15-12
Warm Dark Brown 7ml cod. E5-12

Warm dark brown color for eyebrows. New York has a slight warm/red tendency. Ideal for working on people with a cold undertone, or for correcting slightly gray eyebrows.

MORE THAN EVER BROWS



Bora Bora 18ml cod. E15-13
Cold Extra Dark Brown 7ml cod. E5-13

Cold dark brown color for eyebrows.

Bora Bora has a slight cold/green tendency. Ideal for working on skin with warm undertones or for correcting eyebrows with slightly red tones.



Venice 18ml cod. E15-14
Neutral Extra Dark Brown 7ml cod. E5-14

Neutral dark brown color for eyebrows.

Venice has a neutral tendency which makes it ideal for working on all neutral skins (i.e. not tending to red or green) with very dark eyebrows.



Miami 18ml cod. E15-15
Warm Extra Dark Brown 7ml cod. E5-15

Warm dark brown color for eyebrows.

Miami has a slight warm/ red tendency. Ideal for working on people with a cold undertones, or for correcting slightly gray eyebrows.

RAPID SHADING BROWS



Mimosa ● 18 ml cod. E15-60
Neutral Blond 7 ml cod. E5-60

Beautiful honey blonde. Mimosa pigment has a neutral undertone, which makes it perfect for use on all blonde clients, with fair skin phototype (Fitzpatrick 1) and natural really blond brow hair.



Moscow mule ● 18 ml cod. E15-61
Neutral Light Brown 7 ml cod. E5-61

Beautiful dark blond / light brown. Moscow Mule pigment has a neutral undertone, which makes it perfect for use on all clients with light skin (phototype Fitzpatrick 2) and natural dark blond brow hair.



Sex on the beach ● 18 ml cod. E15-62
Neutral Brown 7 ml cod. E5-62

Beautiful medium brown. Sex on the Beach pigment has a neutral undertone, which makes it perfect for use on all clients with intermediate skin (phototype Fitzpatrick 3 - 4) and natural medium brown brow hair.



Martini ● 18 ml cod. E15-63
Neutral Dark Brown 7 ml cod. E5-63

Beautiful dark brown. Martini pigment has a neutral undertone, which makes it perfect for use on all clients with medium to dark skin (phototype Fitzpatrick 4 - 5) and natural dark brown brow hair.



Cosmopolitan ● 18 ml cod. E15-64
Neutral Extra Dark Brown 7 ml cod. E5-64

Beautiful extra dark brown / almost black. Cosmopolitan pigment has a neutral undertone, which makes it perfect for use on all clients with medium to dark skin (phototype Fitzpatrick 4 - 5 - 6) and natural extra dark brown brow hair.

EYES



Warm Black 18ml cod. E15-34
7ml cod. E5-34

Warm Black: Permanent makeup color for eyes and eyeliner. Biotek's Warm Black pigment is an intense and warm black, ideal for graphic eyeliner and infralashes.



Royal Black 18ml cod. E15-35
7ml cod. E5-35

Royal Black: Permanent makeup color for eyes and eyeliner. Biotek's Royal Black pigment is a long-lasting intense black, ideal for graphic eyeliner and infralashes.



Warm Brown 18ml cod. E15-36
7ml cod. E5-36

Warm Brown: Permanent makeup color for eyes and eyeliner. Biotek's Warm Brown pigment is a rich and intense brown, ideal for graphic eyeliner and infralashes on blonds.



Deep Ocean 18ml cod. E15-40
7ml cod. E5-40

Deep Ocean: Permanent makeup color for eyes and eyeliner. Biotek's Deep Ocean pigment is an intense blue, ideal for a graphic eyeliner or a shaded eyeliner.



Blue Sky 18ml cod. E15-38
7ml cod. E5-38

Blue sky: Permanent makeup color for eyes and eyeliner. Biotek's Blue Sky pigment is a cool light blue, ideal for a graphic eyeliner or a shaded eyeliner.

MIXING & CORRECTORS



Yellow 18ml cod. E15-17
7ml cod. E5-17

Yellow: is a mixing color for permanent make-up and microblading pigments. Biotek's Yellow color must be added to another color in the capsule to make it lighter.



Orange 18ml cod. E15-18
7ml cod. E5-18

Orange is a mixing color / modifier for permanent make-up and microblading pigments. Biotek's Orange color can be added to another color, in the capsule, to make it warmer.



Mineral Red 18ml cod. E15-19
7ml cod. E5-19

Mineral red is a mixing color / modifier for permanent make-up and microblading pigments. Biotek's Mineral red color can be added to another color, in the capsule, to make it more red.



Bright Red 18ml cod. E15-20
7ml cod. E5-20

Bright red is a mixing color / modifier for permanent make-up and microblading lip colors. Biotek's Bright red color can be added to another lip color, in the capsule, to make it brighter.



Green 18ml cod. E15-21
7ml cod. E5-21

Green: is a mixing color for permanent make-up and microblading pigments. The Green color of Biotek can be added to another color, in the capsule, to make it colder. Green, added to another eyebrow color, is ideal for correcting red eyebrows.



Ocra 18ml cod. E15-22
7ml cod. E5-22

Ocra is a corrector for permanent makeup and microblading. Ocra color by Biotek is used to correct eyebrows turned to gray and purple. Use it pure and apply it only in the areas to be corrected.

MIXING & CORRECTORS



Safari

18ml cod. E15-23
7ml cod. E5-23

Safari is a permanent makeup and microblading corrector.

Biotek's Safari color is used to correct old PMU treatments on the lips. It is ideal for covering dark areas due to the deep implantation of pigments.



Orange Red

18ml cod. E15-24
7ml cod. E5-24

Orange red is a corrector for permanent makeup and microblading. The Biotek Orange Red color is used to correct and neutralize dark pigmentation on lips. Apply Orange Red pure to the areas where the lip is darker and then, in the same session, cover the entire lip with another color from the Biotek range.



White

18ml cod. E15-16
7ml cod. E5-16

Biotek's White pigment can be used to create beautiful highlights on lips, eyebrows and paramedicals procedures.

SKIN



Fair 1

18ml cod. E15-25
7ml cod. E5-25

Fair 1 is a skin color for permanent makeup and microblading.
The Fair 1 pigment from Biotek is a very light skin color, with a slight pinkish tendency.



Fair 2

18ml cod. E15-26
7ml cod. E5-26

Fair 2 is a skin color for permanent makeup and microblading.
The Fair 2 pigment from Biotek is a very light skin color, with a slight pinkish tendency.



Fair 3

18ml cod. E15-27
7ml cod. E5-27

Fair 3 is a skin color for permanent makeup and microblading.
The Fair 3 pigment from Biotek is a light skin color, with a slight pinkish tendency.



Medium 1

18ml cod. E15-28
7ml cod. E5-28

Medium 1 is a skin color for permanent makeup and microblading.
Biotek Medium 1 pigment is an intermediate skin color with a slight yellow undertone.



Medium 2

18ml cod. E15-29
7ml cod. E5-29

Medium 2 is a skin color for permanent makeup and microblading.
Biotek Medium 2 pigment is an intermediate skin color with a slight yellow undertone.



Medium 3

18ml cod. E15-30
7ml cod. E5-30

Medium 3 is a skin color for permanent makeup and microblading.
Biotek Medium 3 pigment is an intermediate skin color with a slight yellow undertone.



Tan 1

18ml cod. E15-31
7ml cod. E5-31

Tan 1 is a skin color for permanent makeup and microblading.
The Tan 1 pigment by Biotek is a deep skin color with a slight orange tendency.



Tan 2

18ml cod. E15-32
7ml cod. E5-32

Tan 2 is a skin color for permanent makeup and microblading.
The Tan 2 pigment by Biotek is a deep skin color with a slight orange tendency.



Tan 3

18ml cod. E15-33
7ml cod. E5-33

Tan 3 is a skin color for permanent makeup and microblading.
The Tan 3 pigment by Biotek is a deep skin color with a slight orange tendency.